



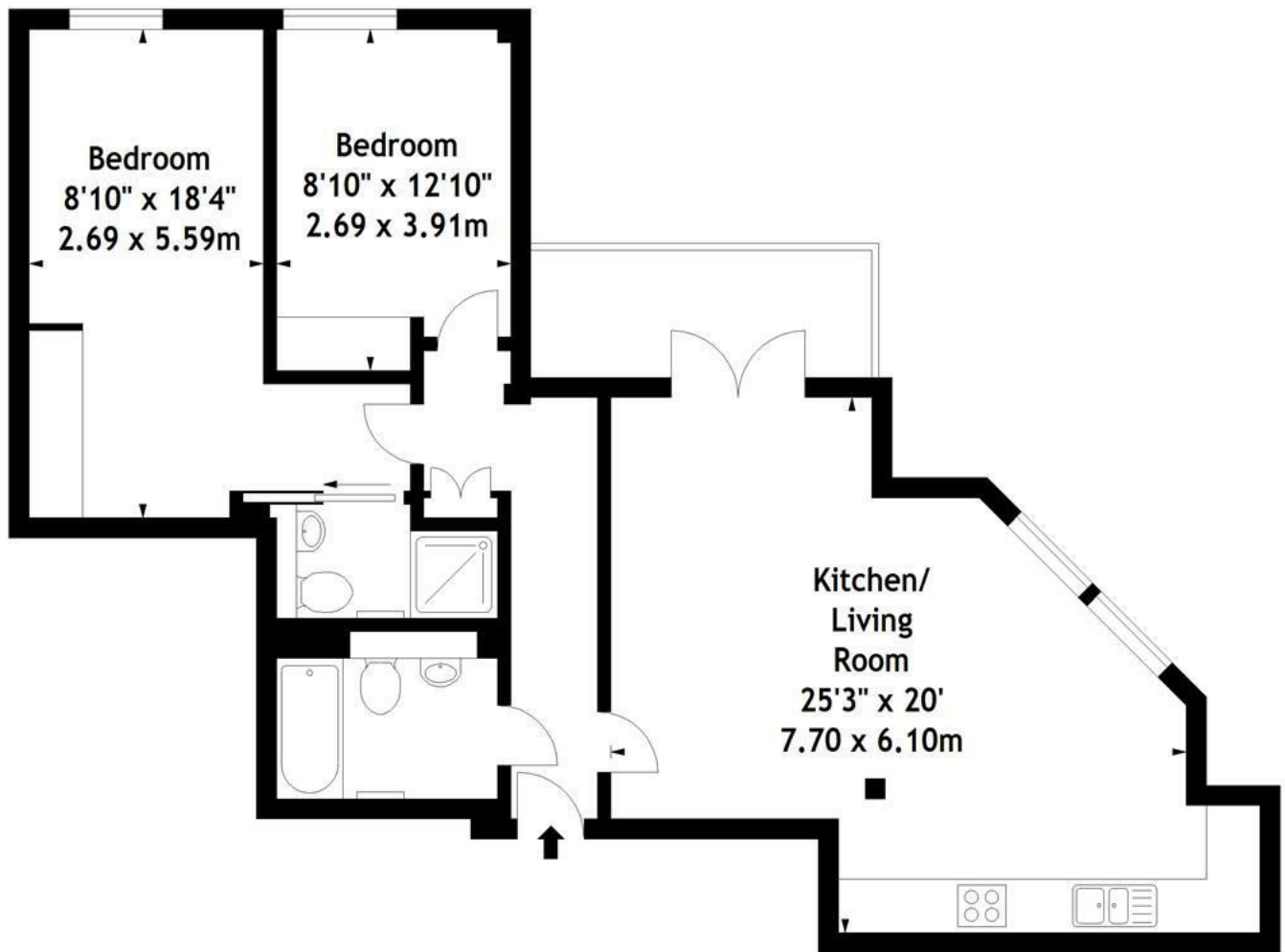
Belmont Terrace, London, W4 5UG

A spacious modern apartment, centrally located close to numerous amenities, benefitting from a sunny balcony with far-reaching views and secure gated parking. The property forms part of a boutique development of 15 apartments with the flat located on the second floor (with lift access). The accommodation comprises a bright and spacious reception room, a fully integrated open-plan kitchen, principal bedroom with luxury ensuite, second double bedroom, spacious bathroom, private balcony, extensive built-in storage, underfloor heating, oak flooring, video entry phone, automatic lift, covered secure parking space. Superb location, 2 minutes walk to Chiswick High Road's shops, cafes and restaurants and close to Chiswick Park and Turnham Green tube stations. The flat is available furnished/part furnished from 2nd May. EPC-C.

- Lovely central location in the heart of Chiswick
- Two beds/two baths
- Private balcony
- Secure covered parking space
- Spacious reception with open plan kitchen
- Offered furnished/part furnished
- Available 2nd May

£2,500 Per Calendar Month

Apartment 10
Merlin House,
Belmont Terrace, W4
Approx. Gross Internal Area
812 Sq Ft - 75.47 Sq M



Second Floor

This plan is for layout guidance only. Not drawn to scale unless stated.
Windows & door openings are approximate. Whilst every care is taken in the preparation of
this plan, please check all dimensions, shapes & compass bearings before making any
decisions reliant upon them.

Energy Efficiency Rating		
	Current	Potential
Very energy efficient - lower running costs		
(92 plus) A		
(81-91) B		
(69-80) C		
(55-68) D		
(39-54) E		
(21-38) F		
(1-20) G		
Not energy efficient - higher running costs		
England & Wales	EU Directive 2002/91/EC	EU Directive 2002/91/EC

Environmental Impact (CO ₂) Rating		
	Current	Potential
Very environmentally friendly - lower CO ₂ emissions		
(92 plus) A		
(81-91) B		
(69-80) C		
(55-68) D		
(39-54) E		
(21-38) F		
(1-20) G		
Not environmentally friendly - higher CO ₂ emissions		
England & Wales	EU Directive 2002/91/EC	EU Directive 2002/91/EC

5-7 Turnham Green Terrace, Chiswick, London, W4 1RG

Tel 020 8747 3800

E-mail lettings@whitmanandco.com

Website www.whitmanandco.com

